

# Snow Plow Scrapings

The Newsletter of the Wilmington Ski Club



## Table of Contents May 2024

### **CLUB BUSINESS**

- [President's Message](#)
- [Membership 2024-25](#)
- [WSC Meeting May 8, 2024](#)
- [WSC Volunteers Needed](#)
- [Election of Club Officers](#)
- [Proposed WSC Bylaws](#)

### **SKIING – Signups begin May 1**

- [IKON Pass Information 2025](#)
- [2025 Wilmington Ski Trips](#)
- [Winter Park, CO Jan 5-10, 2025](#)
- [Andorra / Barcelona Jan 15-26, 2025](#)
- [Whitefish, MT Feb 8-15, 2025](#)
- [Sun Valley, ID Feb 22-Mar 1, 2025](#)
- [Snowbird UT Mar 15-22, 2025](#)

### **EVENTS**

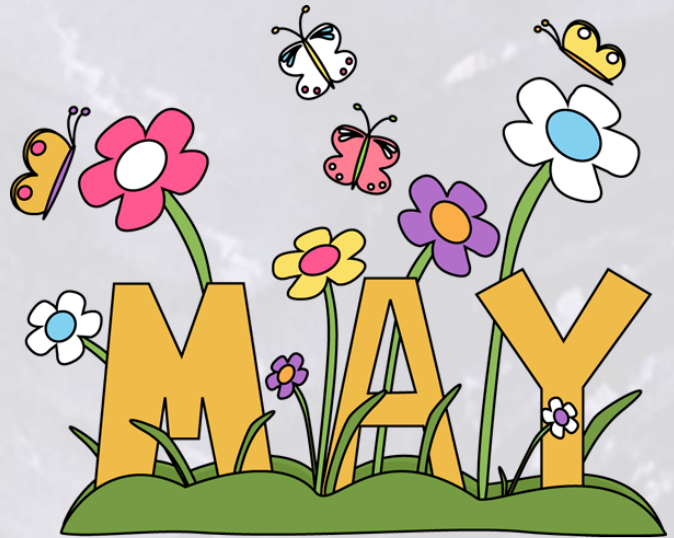
- [Upcoming Events](#)
- [May 8 – WSC Meeting](#)
- [May 10 – Home Happy Hour – Brian and Madeline Auman](#)
- [May 16 – Pickleball](#)
- [May 23 – DE Art Museum](#)
- [May 31 – The Carriage House](#)

### **EVENTS (cont'd)**

- [June 6 – Holy Trinity Greek Festival](#)
- [Aug 9 – Blue Rocks Baseball](#)
- [TBD – White Water Rafting](#)

### **DIRECTORY**

- [2023-24 Officer and Council Member Directory](#)
- [EPSC and National Ski Council](#)
- [EPSC 2025 Japan Intl Trip](#)
- [Links](#)



**SNOW PLOW SCRAPINGS** is the monthly newsletter of the Wilmington Ski Club. Please contact the Membership Committee about questions concerning the *Scrapings*. To have the *Snow Plow Scrapings* issued in a timely manner, submissions will generally not be accepted after the 24th of each month. All submissions are subject to WSC Council approval.

# Snow Plow Scrapings

The Newsletter of the Wilmington Ski Club



## Wilmington Ski Club President's Message May 2024



Dear WSC Members,

The top story of the month is the sad news that Sandy Dobbs, our wonderful Web Site Manager, is retiring after more than 10 years in that position. She has also been responsible for ensuring that our Rules and Bylaws are kept current. Sandy promises to keep in touch with us at our meetings and Happy Hours. She said that she only needs to spend about one hour each week in monitoring the website, - anyone interested in taking Sandy's place?

Pam Kiss, our Treasurer, is also stepping down from her position after several years of upgrading and streamlining our accounting system. Pam assures me that even I could run this current system. She plans to take even longer ski trips leading Larry down the Double Diamonds!

By the time you are reading this, our 2025 Ski Trips Sign-ups are already underway! We have 5 weeklong ski trips and only one, Snowbird, is a place we have been to recently. Where are you planning to ski in 2025 ?

In this "shoulder season" ( no skiing, no beaching ), pay attention to the Activities that Lois Morris and her team have planned for the Club. Beth Lovering is hosting a Happy Hour at the Delaware Art Museum on May 23. For our members, and especially our native Delawareans who have NEVER been inside, you will be impressed. I was ( and that was just last year!) Oh, and don't forget to bring a lawn chair.



Think sunshine,

John



[Table of Contents](#)





## Membership 2024-25

**New Memberships and Renewals  
are being accepted  
Wilmington Ski Club**

**2024-25 Membership required  
for 2025 Weeklong Trips**

(we do other cool stuff year-round)

<https://www.wilmski.org/membership>

**Yearly Dues: \$40.00 (individual)  
\$56.00 (family)**

Our membership year runs from July 1 through June 30.

### **Three different ways to renew or join the Wilmington Ski Club:**

1. Fill out a form at the monthly club meeting.
2. Call or email **Bill Champion at 302-475-2466**. (Please leave/include your name, address and phone number).
3. Print the blank [MEMBERSHIP FORM](#), sign it, and mail it to the PO Box below.

If you have any membership question, please contact Bill Champion by email at [WLChampion.WilmSki@gmail.com](mailto:WLChampion.WilmSki@gmail.com)

Wilmington Ski Club  
P.O. Box 4759  
Wilmington, DE 19807

**Thank you and we look forward to another active year in the WSC.**

[Table of Contents](#)



## Wilmington Ski Club Meeting

**Wednesday, May 8, 2024**

*(second Wednesday of each month)*

**Members and Prospective Members**

**Welcome!**



**The Marshallton  
Steakhouse & Seafood**

**3517 Old Capitol Trail Wilmington, DE 19808**

<https://themarshallton.com/>

**Social: 7:00 pm, Meeting: 8:00 pm**

Drinks and food are available for purchase from the Happy Hour Menu. The bar [happy hour](#) is extended for the WSC until 9:00 pm.

**More details on WSC Website <https://www.wilmski.org/meetings>**

Any questions, contact [Marianne Kennedy](#).

**Next Meeting: June 12, 2024**

WSC strives to provide interesting and informative speakers for our meetings. We need your input. Let us know if there is a topic of interest to the Club and we'll investigate. Is there something you would like to know more about? Do YOU have a little-known skill or talent that others would enjoy? Limit 15–20-minute presentation.

Let us know!

[Table of Contents](#)





## Volunteers Needed



**WE NEED  
YOUR HELP!**

Wilmington Ski Club

Open Council Positions

For year 2024 - 2025



**WE NEED  
YOUR HELP!**

- Treasurer
- Webmaster
- Summer trips coordinator
- Marketing
- Day Trip Coordinator

The Wilmington Ski Club is an all-volunteer organization.

We can succeed only with member participation.

Contact [John Lenz](#) or call 302-598-3764 for more information.

<https://www.wilmski.org/open-council-positions>

 WE NEED YOUR SUPPORT

[Table of Contents](#)



## Election of Club Officers

The current (i.e., 2023-24) ski club year ends June 30, 2024. Election of club officers for the for upcoming club year (i.e., beginning July 1, 2024) will be held in early June. As in the past, we will conduct the elections on-line. All current members (i.e., for 2023-24 club year) are eligible to vote.

***Voting instructions will be sent by email to current members in May. Officers to be elected are:***

- **President**
- **Vice-president**
- **Secretary**
- **Treasurer**
- **Asst Treasurer**



Anyone interested in being an officer, can self-nominate or you can nominate someone (with their permission!). Please respond to this email to submit a nomination.

Please note, because of term-limits, we need to elect a new Treasurer. The other incumbents are running for re-election. [wilmingtonskiclub@gmail.com](mailto:wilmingtonskiclub@gmail.com)

Results of the election will be announced at the June ski club meeting and by email to all 2023-24 members and 2024-25 members.





## Proposed Wilmington Ski Club Bylaws

The WSC Bylaws were last updated March 1994. Council is proposing an update which we request members to review. The revisions reflect bringing the bylaws up to date and major changes include:

- Reference to paper records/balloting changed to electronic versions

After you have reviewed the document, please contact Sandy Dobbs (sdobbs@comcast.net) if you need any additional information. It is planned to vote on the revised Bylaws in **May** by membership.

[Link: Proposed Bylaws in Scrapings](#)

# Snow Plow Scrapings

The Newsletter of the Wilmington Ski Club



## Wilmington Ski Club IKON Pass Information 2025

**2024/2025 Ikon Pass  
On Sale Now!**



The Club has decided that 2025 will be an “Ikon year”. That is, most of our trips (except Whitefish, which is independent) will visit a resort that uses the Ikon Pass. As you decide which trips you want to join for 2025, consider which of the Ikon Passes would best match your travel plans. Our 2025 trip dates, destinations, and their Ikon requirements will be:

- **January 5-10:** Winter Park, CO. Unlimited ski days on Ikon Base or higher
- **January 15-26:** Andorra, 5 ski days on Ikon Base, 7 days on full Ikon
- **February 8-15:** Whitefish, MT. Independent; trip cost will include 5-day lift tickets
- **February 22-March 1:** Sun Valley, ID. 0 ski days on Ikon Base, 5 days on Ikon Base Plus, 7 days on full Ikon
- **March 15-22:** Snowbird, UT. 5 ski days on Ikon Base, 7 days on full Ikon.

Alta access requires Ikon Base Plus or higher.

As you can see, deciding which passes to buy can be complicated. We encourage you to visit [ikonpass.com](https://ikonpass.com) to read about the options and costs.

For all five trips, signups begin in May.

May 1, 2024, early sign-up for [continuous members](#)

May 15, 2024, early sign-up for current and new members

[Table of Contents](#)



# Snow Plow Scrapings

The Newsletter of the Wilmington Ski Club



## 2025 Wilmington Ski Trips

**SIGN UP**

**Signups begin in May:**

May 1, 2024, early sign-up for [continuous members](#)

May 15, 2024, early sign-up for current and new members



### Winter Park, CO

**January 5-10**

- Unlimited ski days on Ikon Base or higher or \$300 4-day lift ticket
- 5 nights slopeside at Vintage Hotel

### Andorra / Barcelona

**January 15-26**

- Andorra, 5 ski days on Ikon Base, 7 days on full Ikon or 5/6-day pass in advance
- 3 nights at Hotel Acta Atrium Palace
- 7 nights at Sport Hotel Village in Soldeu
- 5 Dinners and daily breakfast included



### Whitefish, MT

**February 8-15**

- Independent; trip cost will include 5-day lift tickets
- 7 nights at the Lodge at Whitefish Lake
- Daily breakfast included
- Group dinner one night



### Sun Valley, ID

**February 22-March 1**

- 5 days on Ikon Base Plus, 7 days on full Ikon or 5/6-day pass in advance
- 7 nights at 4 Star Limelight Hotel
- Daily breakfast included
- Group dinner one night



### Snowbird, UT

**March 15-22**

- 5 ski days on Ikon Base, 7 days on full Ikon. Alta access requires Ikon Base Plus or higher.
- 7 nights at Cliff Lodge
- Group dinner one night

[Table of Contents](#)



## WINTER PARK, COLORADO



**370" of snow each season, 3060' vertical**

**3,081 acres of skiing: ½ beginner/intermediate, ½ advanced**

**A LOWER COST TRIP FEATURING  
ALL THE AMENITIES YOU EXPECT FROM WSC**

**JANUARY 5-10, 2025 – SUNDAY TO FRIDAY**

**JUST \$1200**

**(For Ikon Pass holders. Double Occupancy.  
4-day lift tickets available for \$300.)**

### TRIP FEATURES:

- *5 Nights at the slopeside Vintage Hotel*
- *150 yards from the Cabriolet*
- *Hot tub, heated pool, kitchenette*
- *Roundtrip Air, PHL-DEN*
- *All Ikon Passes supported; free skiing!*
- *4-day lift ticket only \$300 if you don't hold an Ikon Pass*
- *First morning group breakfast (\$15 credit)*
- *Apres socials*

**WSC Trip Leaders**  
Bob Cann & Kurt Tappe  
[cannrh@yahoo.com](mailto:cannrh@yahoo.com) &  
[ktappe@mac.com](mailto:ktappe@mac.com)  
(302) 397-1762 & (302) 290-4371

**PAYMENT SCHEDULE:**  
Early Sign-up: \$600 by May 1  
Sept. Meeting: Remaining balance



# Barcelona / Andorra

Wilmington Ski Club

January 15 – 26, 2025



- \$3,089** per person / double occupancy.
- Add **\$1,842** single occupancy (limit 4).
- Land-only subtract **\$920** (limit 4).
- 5 ski days on Ikon Base, 7 days on full Ikon or 5/6-day pass available.

## Trip includes:

- Round trip air to Barcelona
- All ground transportation between Barcelona and Andorra



### GRANDVALIRA

Grandvalira Resorts  
ANDORRA

#### Barcelona:

- 3 nights at [Hotel Acta Atrium Palace](#)
- 2-day Barcelona City Pass
- Daily breakfast

#### Andorra:

- 7 nights at [Sport Hotel Village](#) in Soldeu
- Gondola access in the building
- Daily breakfast
- 5 Dinners



- ❖ **Passports must be valid to July 30, 2025.**
- ❖ **Signup form required with initial payment.**
- ❖ **May 1, 2024, early sign-up for Continuous Members.**
- ❖ **May 15, 2024, early sign-up for Current and New members.**
- ❖ [Link to member definition](#)

#### Payment schedule:

- \$1,000 due at sign-up
- \$1,000 due Oct 1, 2024
- Balance due Dec 1, 2024

**Madeline Auman**

[Leader]

(614) 204-7443

[bcahma@sbcglobal.net](mailto:bcahma@sbcglobal.net)

**Marianne Kennedy**

[Asst Leader]

(302) 299-5877

[mlkennedy@comcast.net](mailto:mlkennedy@comcast.net)



**Barcelona:** 3 nights at the [Hotel Acta Atrium Palace](#) in the heart of the city.

[Table of Contents](#)

**Purchase of trip insurance is highly recommended.**





## Whitefish, MO

February 8-15, 2025

# Whitefish

A hidden gem in western Montana

**FEBRUARY 8-15, 2025**

**\$2550 (DOUBLE OCCUPANCY)**

**3000 ACRES OF SKIING!**

15 % ● BEGINNER

35 % ■ INTERMEDIATE

40 % ◆ ADVANCED

10 % ◆◆ EXPERT

VERTICAL DROP 2350 FEET



### Trip Includes:

- Round trip airfare Philadelphia to Kalispell (Glacier Nat'l Park) airport
- Ground transportation: 19 mile ride (with grocery stop) to Lodge at Whitefish Lake
- 7 nights at the Lodge at Whitefish Lake (4000 feet; no altitude issues!)
  - 2-queen bed or 1-king bed rooms (let us know your preference)
  - Daily hot buffet breakfasts included
  - Free daytime luxury shuttle service to the mountain and into town of Whitefish
  - Hot tub and pool
- Mid-week outing to Whitefish for an evening of shopping & group dinner
- 5-day lift ticket included. 6th day can be purchased @ \$91.
- Attendees 65+ get 6th day lift ticket free!
- Attendees 70+ get \$170 off!

Prices subject to change. **Payment Schedule:**

Deposit of \$750 on May 1st, remaining balance by October meeting.

**Trip Leaders: Kurt Tappe, Susan Maximuk**

[ktappe@mac.com](mailto:ktappe@mac.com) (302) 290-4371 [susan.maximuk@gmail.com](mailto:susan.maximuk@gmail.com) (302) 299-6011



February 22 - March 1, 2025

IDAHO

Wilmington Ski Club

# SunValley



- \$2495** per person / double occupancy.  
Final price TBD when air opens/finalized
- Bring** your **Ikon Base Plus Pass** for 5 days skiing or **Full Ikon Pass** for 7 days skiing or add lift tickets to your order at final payment on 10/15/24

2 OF 3-DAY PASS:	\$ 304.00
3 OF 4 DAY PASS:	\$ 440.00
4 OF 6 DAY PASS:	\$ 572.00
5 OF 7 DAY PASS:	\$ 700.00
6 OF 8 DAY PASS:	\$ 824.00

### Trip includes:

- Round trip air from PHL
- All ground transfers
- 7 nights at 4 Star Limelight Hotel
- Daily skiers Breakfast
- Group Dinner



### Bald/Dollar Mountain [Sun Valley Link](#)

- ❖ 2,054 skiable acres -
- ❖ 12 lifts and 100 trails
- ❖ 3400' vertical with LOTS of bowl skiing

### 4 Star LimeLight Hotel

#### [Limelight Hotel Link](#)

- ❖ Queen/Queen Rooms w/ Balcony
- ❖ Located in town of Ketchum
- ❖ Pool, Hot Tub, Gym
- ❖ Apres Ski Lounge and Live Music
- ❖ Short shuttle ride to Bald and Dollar Mountains.

**\$750 Due at Signup \***

**\$895 07/15/24**

**\$850 10/15/24 plus**

**Lift Tix (if no Ikon Pass)**

- ❖ **\* May 1, 2024, early sign-up for Continuous Members.**
- ❖ **\* May 15, 2024, early sign-up for Current and New members.**
- ❖ [Link to member definition](#)
- ❖ **\* Signup form required with initial payment.**
- ❖ Purchase of trip insurance is highly recommended

### Leader: Anne Ceres

313 Regis Falls Ave  
Wilmington, DE 19808  
(302) 229-9905

[aceres9@gmail.com](mailto:aceres9@gmail.com)

### Asst Leader: Dan Falcone

Daniel Falcone  
(302) 468-0054

[dan.a.falcone@gmail.com](mailto:dan.a.falcone@gmail.com)



ents





- \$2050** per person / double occupancy.
- Air NOT included, group flight on United \$600 extra
- 5-day lift ticket OR \$559 on-mountain credit for Ikon Pass holders.  
(Credit can be used for breakfasts, dinners, spa, or any other services & products in the village.)
- 5 ski days on Ikon Base, 7 days on full Ikon. Alta access requires Ikon Base Plus or higher.

### Trip includes:

- Round trip air from PHL to Salt Lake City
- Coach to Snowbird with grocery/liquor stop
- 7 nights at Cliff Lodge
- Midweek Group Dinner
- Wine, cheese, beer & pizza reception



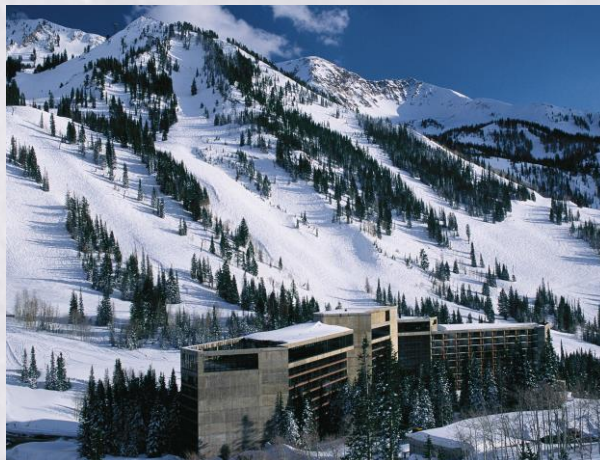
**Snowbird:** ●27% ■38% ◆35%

**Alta:** ●25% ■40% ◆35%

### Cliff Lodge features:

- ❖ Ski-in / ski-out
- ❖ 3 Hot tubs
- ❖ Spa
- ❖ Heated Pool
- ❖ Ski lockers
- ❖ WiFi
- ❖ Fridge
- ❖ Hair dryer
- ❖ Baggage handling

### [Snowbird Cliff Lodge](#)



- \$1000 Due at Signup \***
- Full balance due by Oct Club Mtg**

- ❖ \* May 1, 2024: early sign-up for Continuous Members.
- ❖ \* May 15, 2024, early sign-up for Current and New members.
- ❖ [Link to member definition](#)
- ❖ **Signup form required with initial payment.**
- ❖ Purchase of trip insurance is highly recommended

### Leader: Bob Jamieson

401 Ketch Ln,  
Middletown, DE 19709  
(302) 373-8278

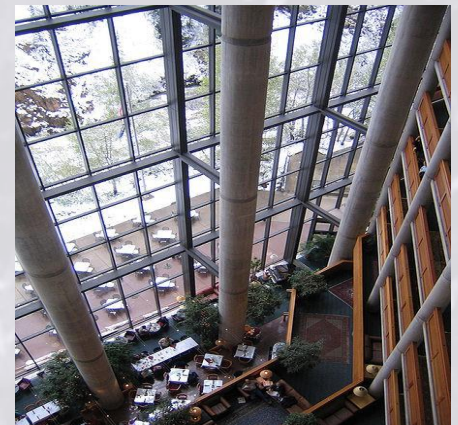
[bob.jamieson@verizon.net](mailto:bob.jamieson@verizon.net)

### Asst Leader: Dale Wegman

[rdwegman@mindspring.com](mailto:rdwegman@mindspring.com)

<https://www.snowbird.com/>

<https://www.alta.com/>



[Table of Contents](#)





## Upcoming events

- **[Wednesday, May 8, 2024 - Wilmington Ski Club Meeting](#)**

**Marshallton Steakhouse  
and Seafood**

**3517 Old Capitol Trail  
Wilmington, DE**

**Social: 7:00 pm, Meeting: 8:00 pm**

- **[Wednesday, May 8, 2024 - Wilmington Ski Club Meeting](#)**

- **[Friday, May 10, 2024 – Home Happy Hour hosted by Brian and Madeline Auman](#)**

- **[Wednesday, May 16 – Pickleball](#)**

- **[Thursday, May 23 – DE Art Museum](#)**

- **[Friday, May 31 – The Carriage House](#)**

- **[Thursday, June 6 – Holy Trinity Greek Festival](#)**

- **[Friday, August 9 – Blue Rock Baseball](#)**

# Snow Plow Scrapings

The Newsletter of the Wilmington Ski Club



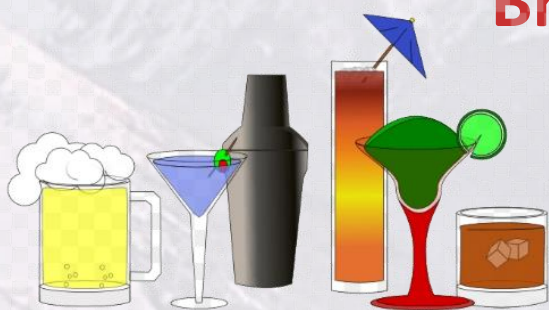
## Home Happy Hour

Friday, May 10, 2024

6pm - 10pm

**Hosted by**

**Brian & Madeline  
Auman**



Bring a bottle of wine or beer to share, and an appetizer or dessert for four and be ready to have fun and relax with your club friends.

Please **RSVP to Madeline by Monday, May 6 to**

**Madeline** or  
call 614-204-7443.

**HAPPY  
HOUR!**



176 Shinnecock Hill  
Avondale, PA

Hope to see you at 6:00pm on May 10!

If YOU would like to host a happy hour at YOUR home,  
contact **Lois Morris**

[Table of Contents](#)





## Pickleball

Wednesday, May 16, 2024

5:30 PM



**LET'S PLAY PICKLEBALL!**

**Wednesday, May 16th at 5:30pm**

**Rain date: Thursday, May 23rd at 5:30pm**

**Village of Hershey Run Pickleball Courts**

**1 Hershey Run Drive, Wilm. 19804**

What do you do in the off season when there's no skiing? You play the fastest growing sport in the nation - pickleball! I have 2 private pickleball courts where I live, and I'd love to share what I've learned so far. It's a super fun sport, easy to learn, (harder to master)! No experience necessary and we have enough equipment for 8 players. If we have more than 8, we'll rotate new players in. Both experienced and newbies players are welcome.

Rain/high winds/very cold temps will force a cancellation. Please email or text with your contact info if you'll be playing. I'll contact those who confirmed if a cancellation occurs. If you're interested in future pickup games email me with your info. See you on the courts!

**Kathy Chidester 302.545.4817 or via email at [skikat9@hotmail.com](mailto:skikat9@hotmail.com)**

[Table of Contents](#)



## Happy Hour

Thursday, May 23, 2024 5pm – 7:30pm



## Delaware Art Museum, Sculpture Garden

2301 Kentmere Parkway, Wilmington, DE 19806

5:00 - 7:30 pm (free entry to museum 4:00 - 8:00 pm)

- Cash bar
- Food Truck: Los Taquitos de Puebla
- [Kaffeina](#) will be open during Happy Hours.



Ty Mathis, singer-songwriter,  
providing live music.

Bring a lawn chair.

**Weather dependent.**

Questions: Beth Lovering, 302-290-9200

[Sculpture Garden Happy Hours: Opening Night featuring Ty Mathis](#)

[Table of Contents](#)





## Happy Hour

Friday, May 31, 2024 5pm – 11:00pm



## Carriage House Bar & Lounge

located @ the corner of 9th & Rodney St. on  
The University & Whist Club property  
805 N. Broom St., Wilmington, DE 19806



**Friday, May 31**  
**5:00 - 11:00 pm**

**(Carriage House open to the public on Friday nights); Music 6:00 - 9:00 pm**

**Questions: Beth Lovering, 302-290-9200**

[Table of Contents](#)



## Happy Hour

Thursday, June 6, 2024 4:30pm –?



## Holy Trinity Greek Festival

808 N. Broom St., Wilmington, DE 19806

**Thursday, June 6**

**4:30 - ? pm**

Join us for delicious, authentic Greek specialties such as dolmades, moussaka, gyros, ouzo, etc.

Look for us in the main outdoor area of the festival or out of the sun under a big tent!

**Weather dependent.**

Questions: Beth Lovering, 302-290-9200

[Table of Contents](#)





## Blue Rocks Baseball

Friday, August 9, 2024

**Come Cheer on Mr. Celery!**

**Friday, August 9, 2024**

***Fireworks After the Game***

**Game Time 6:35 pm**

**Seats in Upper Boxes**



<https://www.wilmski.org/blue-rocks>

**If you are interested in  
going or for more information,  
contact Bill Champion at**

***wilmingtonskiclub@gmail.com***

[Table of Contents](#)





## White Water Rafting

I am organizing a white-water raft trip on the Lehigh River again this year. I am planning to go on a Saturday in July or August. The available dates are July 13, July 20, August 3, August 17 or August 24. My preference is date in July, but we will choose a date to accommodate the most people.

The rafting company we use is Pocono White Water in Jim Thorpe, PA. The raft trip lasts about 4 or 4.5 hours, so we are typically done by 5 pm. The cost is about \$75 per person.

Their website is <https://www.poconowhitewater.com/>

If you are interested in going or want more details, please contact Bill Champion ([WLChampion.WilmSki@gmail.com](mailto:WLChampion.WilmSki@gmail.com)).



[Table of Contents](#)



# Snow Plow Scrapings

The Newsletter of the Wilmington Ski Club



## 2023-24 Officer and Council Member Directory

<b><u>Elected Officers</u></b>			
President:-	John Lenz	302-598-3764	<a href="mailto:johnlenz2309@gmail.com">johnlenz2309@gmail.com</a>
Vice President:-	Mat Mitten	302-530-8712	<a href="mailto:matmitten@comcast.net">matmitten@comcast.net</a>
Secretary:-	Denise Bassett	302-530-5546	<a href="mailto:dmbassett62@gmail.com">dmbassett62@gmail.com</a>
Treasurer:-	Pam Kiss	302-463-9256	<a href="mailto:pamela.j.kiss@gmail.com">pamela.j.kiss@gmail.com</a>
Asst. Treasurer:-	Raciel Moratin	302-753-3407	<a href="mailto:raciel99@gmail.com">raciel99@gmail.com</a>
<b><u>Council Members</u></b>			
Activities:-	Lois Morris	484-431-6769	<a href="mailto:lcm2unow@gmail.com">lcm2unow@gmail.com</a>
Asst.*:-	Ewa Papiez	214-543-5843	<a href="mailto:EWAPAPIEZ@YAHOO.COM">EWAPAPIEZ@YAHOO.COM</a>
Appreciation.*:-	Lois Morris	484-431-6769	<a href="mailto:lcm2unow@gmail.com">lcm2unow@gmail.com</a>
Happy Hours.*:-	Lois Morris	484-431-6769	<a href="mailto:lcm2unow@gmail.com">lcm2unow@gmail.com</a>
Business Manager:-	Sue Gargel	610-457-2341	<a href="mailto:suefair17@yahoo.com">suefair17@yahoo.com</a>
Legal:-	Geoff Meyer	302-593-7270	<a href="mailto:geoffrey.e.meyer@gmail.com">geoffrey.e.meyer@gmail.com</a>
Meetings:-	Marianne Kennedy	302-299-5877	<a href="mailto:mlkennedy@comcast.net">mlkennedy@comcast.net</a>
Membership:-	Bill Champion	302-475-2466	<a href="mailto:wlchampion.wilmski@gmail.com">wlchampion.wilmski@gmail.com</a>
Scrapings Editor:-	Linda Falconi	856-332-4039	<a href="mailto:falconi.linda@yahoo.com">falconi.linda@yahoo.com</a>
Communications.*:-	Kurt Tappe	302-290-4371	<a href="mailto:ktappe@mac.com">ktappe@mac.com</a>
Marketing.*:-	OPEN	-----	-----
Webmaster:-	Sandy Dobbs	302-753-0004	<a href="mailto:WilmingtonSkiClub.Webmaster@gmail.com">WilmingtonSkiClub.Webmaster@gmail.com</a>
Asst. Webmaster.*:-	Kurt Tappe	302-290-4371	<a href="mailto:WilmingtonSkiClub.Webmaster@gmail.com">WilmingtonSkiClub.Webmaster@gmail.com</a>
E-Mail Distribution.*:-	Bill Champion	302-475-2466	<a href="mailto:wlchampion.wilmski@gmail.com">wlchampion.wilmski@gmail.com</a>
<b><u>Skiing</u></b>			
Trips Co-chair:-	Anne Ceres	302-229-9905	<a href="mailto:aceres9@gmail.com">aceres9@gmail.com</a>
Trips Co-chair:-	Kurt Tappe	302-290-4371	<a href="mailto:ktappe@mac.com">ktappe@mac.com</a>
Day Trips *:-	Larry Kiss	302-358-8963	<a href="mailto:larry.r.kiss@gmail.com">larry.r.kiss@gmail.com</a>
Racing.*:-	Bill Champion	302-475-2466	<a href="mailto:wlchampion.wilmski@gmail.com">wlchampion.wilmski@gmail.com</a>

Positions marked with (\*) are non-voting Council members.

### **May WSC Council Meeting**

**Tuesday, May 28**

**28, 2024, 7:30 pm via Video Conference**

**Open to all WSC members, contact a Council member  
for access.**

[Table of Contents](#)

# Snow Plow Scrapings

The Newsletter of the Wilmington Ski Club



## EPSC and National Ski Council Federation NEWS



The **Eastern Pennsylvania Ski Council** website is a good resource for snow sports happenings in our area.

For more information, see:

<https://easternpaskicouncil.org/wp/home/>

[\*EPSC 2025 International Trip - Japan\*](#)



**National Ski Council Federation**  
newsletters.

Catch up with happenings around the country with

<https://skifederation.org/>

[Table of Contents](#)



# Japan



**EPSC** EASTERN PA  
SKI COUNCIL

## TRIP OF A LIFETIME

FEBRUARY 21 - MARCH 7, 2025

### Lodging

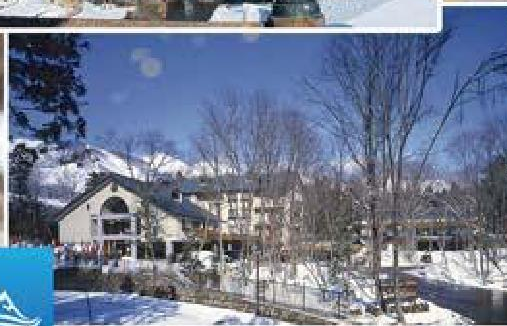
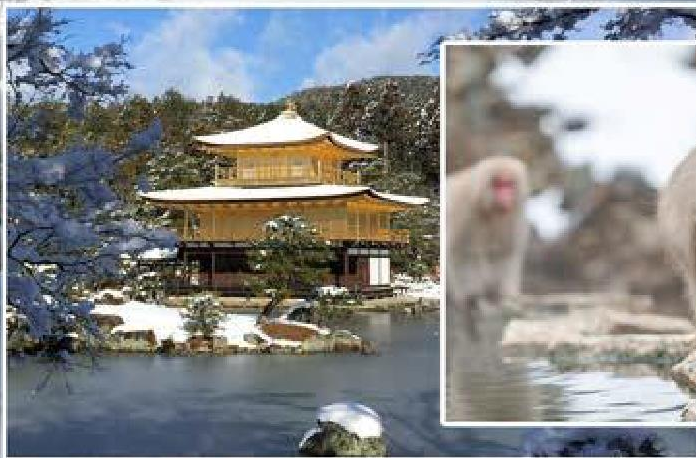
- 3 nights in Tokyo - Keio Plaza Tokyo 4.5-star (with breakfast)
- 7 nights in Hakuba - Mominki Hotel 3.5-star (with breakfast)
- 3 nights in Kyoto - Gran Via Hotel 5-star (with breakfast)

### Included

- Round-trip Economy flights
- Airport meet and greet
- Assistance with shipping paperwork
- Private group transfer from the hotel to the airport
- 13 nights lodging
- 13 breakfasts
- Tour of Tokyo
- Gonpachi Dinner Welcome to Japan
- Suica (Metro) card
- Transfers to Hakuba
- Welcome Gathering
- JR Rail pass
- Lift pass 5 days
- Snow Monkey tour
- Tour of Zenkoji & Nakamise
- Lunch at a traditional Sake brewery
- Visit the 1400-year-old Zenkoji temple in Nagano
- Transfers to Kyoto
- Tour of Kyoto
- Transfers to the airport.
- Local guide throughout the trip
- Alpine Adventures staff member to assist in resort with all aspects of the trip

### HIGHLIGHTS:

- Tour of Tokyo
- Gonpachi Dinner Welcome to Japan
- Snow Monkey tour and
- Tour of Zenkoji & Nakamise
- Visit the 1400-year-old Zenkoji temple in Nagano
- Tour of Kyoto



Please call Max for more details: 1-800-755-1330 Ext 210





# EPSC EASTERN PA SKI COUNCIL

## Japan EPSC Council Trip – February 21 – March 7, 2025

### Trip of a Lifetime!!

### Additional Information

#### Trip Description:

### EPSC INTERNATIONAL TRIP

- EPSC has put together an amazing trip of a lifetime for the 2025 ski season for people who have always dreamed of traveling to Japan and skiing Japan's amazing powder!! The details of what is included are listed on the other side of the flyer.
- First, we will spend three nights in Tokyo to unwind from the flight and do some sightseeing in Japan's biggest city which has a lot to see. Some of Tokyo's standout, must see attractions include: the pulsating city lights and shopping of Shinjuku, Shibuya and Ginza, the electronic district of Akihabara and the world famous Tokyo Disneyland and Tokyo Disney Sea, the amazing sumo stables, Tsukiji Fish Market, Imperial Palace, Tokyo Tower and Tokyo Skytree, along with the must see Sensoji Temple. A tour of Tokyo will be provided as part of the trip.
- Then we will head to the Hakuba valley Ski region which is located just over 200km from Tokyo. Hakuba is located at the foot of the Japanese Alps which tower above Hakuba, reaching over 3000m above sea level.
- With over 200 runs and almost 150 lifts and gondolas across the resorts; Hakuba really has to be skied to be believed.
- On top of the great Powder Snow which Hakuba is famous for (Hakuba averages over 10m of snow every year), Hakuba also offers great skiing and snowboarding for the whole family. Hakuba has a balance of 40% Beginner Runs, 40% Intermediate Runs and 20% Advanced Runs.
- Due to Hakuba's size and scale you will often find yourself on beautiful undisturbed runs and no lift lines. You get to enjoy more of what Hakuba has to offer. Due to the investment and infrastructure that Hakuba gained when it helped host the 1998 Nagano Winter Olympics getting a round the mountain is fast and easy.
- Hakuba also has a great range of traditional restaurants and bars for great Après action and some of the best onsen's Japan has to offer to help take a way the aches and pains of the day.

#### Skiing:

- Hakuba is not a single resort, but is a spectacular valley's spread over 40km, home to 10 resorts providing vast terrain for all levels of skiers and snowboarders. With so many Hakuba ski resorts to visit, there is truly something for everyone.
- You can ski any of the more than standard 5-day lift pass included in the trip pricing.
- All ten Hakuba Valley Ski Resorts are also partners with the EPIC Pass which provides 5 consecutive days of skiing. If you plan to have an EPIC Pass in 2025, you can deduct the lift ticket cost (approx. \$250) from the trip pricing listed below. You can get details on the EPIC Pass details with Hakuba at the following website: <https://www.epic.pass.com/region/partners/hakuba-valley-japan.aspx>
- You can get information on all of the ski resorts that are covered by our lift pass at the following websites: [https://www.hakubavalley.com/en/ski\\_resort\\_info\\_en/](https://www.hakubavalley.com/en/ski_resort_info_en/)  
<https://www.skixperience.com/resorts/hakuba/#?text=Hakuba%20is%20not%20a%20single%20run%20something%20for%20everyone>.

#### Approximate Trip Price:

- **Package Price: ~\$5050.00** (This approximate price is based on estimated airfare and may change somewhat depending on how the airfare changes - price is subject to changes)
- **Deposit: \$500 at time of sign-up\***  
\* You must be a member of an EPSC ski club or from a ski club who is a member of a Council within the National Ski Council Federation

If you are interested in signing up for this trip, please contact David Schoneker at [dschoneker@aol.com](mailto:dschoneker@aol.com) or call him at 267-251-3123 for a Trip Application.





## Links

### **Trip Application.**

This is the link to the WSC Forms Page on our website where you can access the various trip applications:

<http://www.wilmski.org/policies-and-forms/>

The link also takes you to WSC Trip cancellation policies and review is recommended for anyone who has signed up for a Wilmington Ski Club ski vacation.

### **Membership Application.**

This is the link to the WSC membership information and application form:

<http://www.wilmski.org/membership/>



### **Eastern Pennsylvania Ski Council and National Ski Council Federation**

Use these links to find discounts and activities from the National Ski Council Federation and EPSC and other member clubs:

**THINK SNOW!**

<https://skifederation.org/>  
<http://www.wilmski.org/epsc>

[Table of Contents](#)